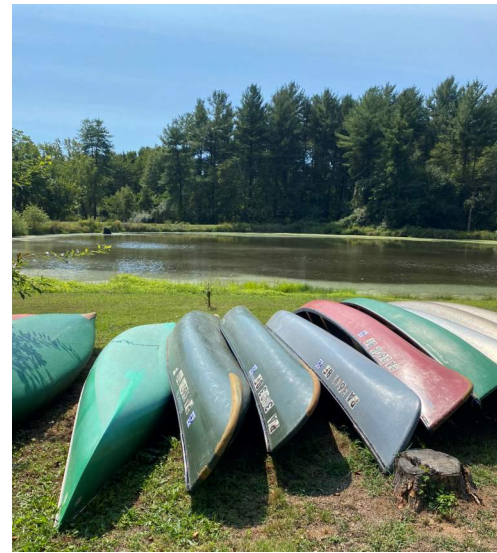




The Lutheran Camping Corporation
of Central Pennsylvania
Kirchenwald, Nawakwa, & The Wittel Farm



MASTER PLAN 2024-2025



The Lutheran Camping Corporation
of Central Pennsylvania
Kirchenwald, Nawakwa, & The Wittel Farm

MASTER PLAN PROCESS TO DATE

- Monthly design meetings with LCC staff
- Architect's photographic survey of Kirchenwald and Nawakwa facilities and review of existing drawings
- Compilation of maintenance projects and program improvements wishlists with LCC staff
- Analysis drawings documenting building uses and types, roads, and accessibility
- Online survey seeking input on camp facilities and improvements
281 responses
- Preparation of schematic plans illustrating options for program improvements

MASTER PLAN PROCESS – FUTURE

- Input meetings with camp constituents to gather feedback on program improvements
4 planned in Jan/Feb at several locations - Harrisburg, Lititz, York, Gettysburg
- Ongoing monthly review meetings with LCC staff
- Refinement of design options
- Preparation of opinions of probable costs (OOPCs)
- Preparation and presentation of final report, May 2025



The Lutheran Camping Corporation
of Central Pennsylvania
Kirchenwald, Nawakwa, & The Wittel Farm

Design meetings with LCC Staff

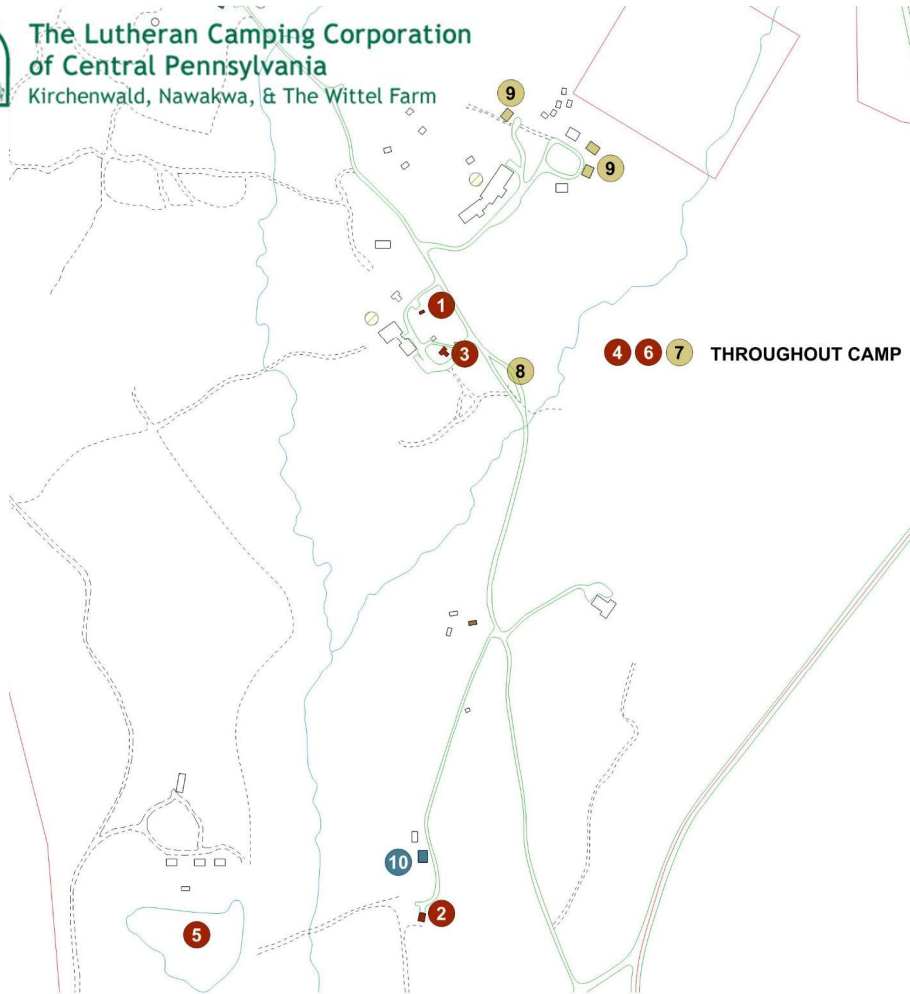
- 1) Documentation of major maintenance projects related to existing facilities.



MASTER PLAN SCOPE



The Lutheran Camping Corporation
of Central Pennsylvania
Kirchenwald, Nawakwa, & The Wittel Farm



IMMEDIATE NEEDS

1. AUTOMATION OF WELL PUMP SYSTEM
2. ROOF REPAIR - MAINTENANCE BUILDING
3. REPLACEMENT OF (2) WINDOW CASEMENTS, SUMMER OFFICE/ CAMP STORE
4. UPDATING PROPANE TANKS AND SYSTEMS THROUGHOUT CAMP
5. RESTORATION OF LAKE TO SUPPORT FISHING AND BOATING
6. REMOVING INVASIVE PLANTS FROM PROPERTY



MEDIUM-TERM (2-5 YEARS) NEEDS

7. STAINING AND REPAIR OF MOST CAMP BUILDINGS
8. EXCAVATION/REGRAVING AND POSSIBLE PAVING OF SLOPED PORTION OF ROAD
9. REPLACEMENT OF FURNACES IN (2) CABINS AND THE WASH HOUSE



LONG-TERM (5+ YEARS) NEEDS

10. FINISH HARDWOOD FLOORS AND REFURNISH COTTAGE

KIRCHENWALD: EXAMPLE OF MAINTENANCE PROJECTS REVIEW



The Lutheran Camping Corporation
of Central Pennsylvania
Kirchenwald, Nawakwa, & The Wittel Farm

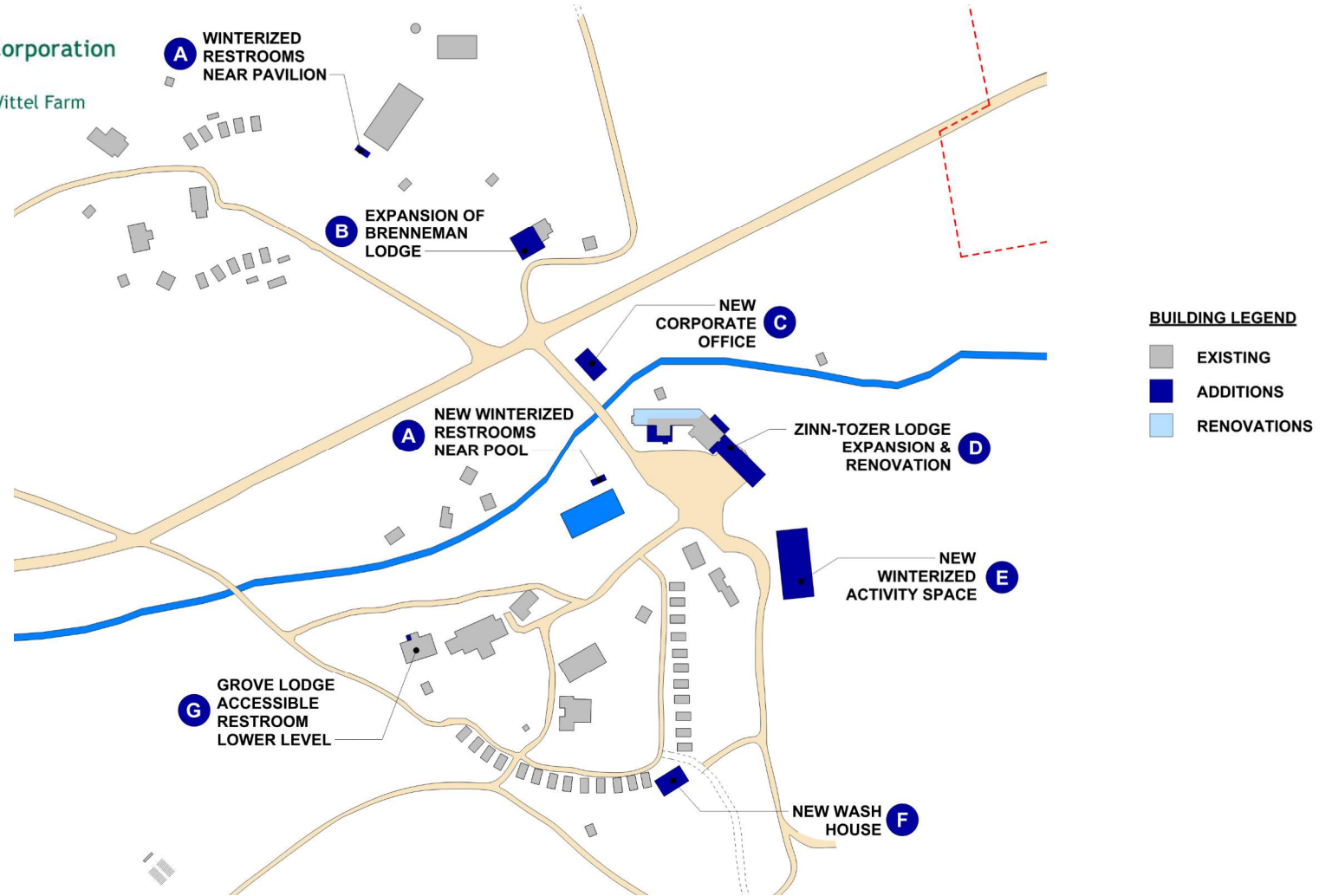
Design meetings with LCC Staff

2) Documentation of options for capital improvements to provide program enhancements.

We are seeking input from you on these potential capital projects for each camp.



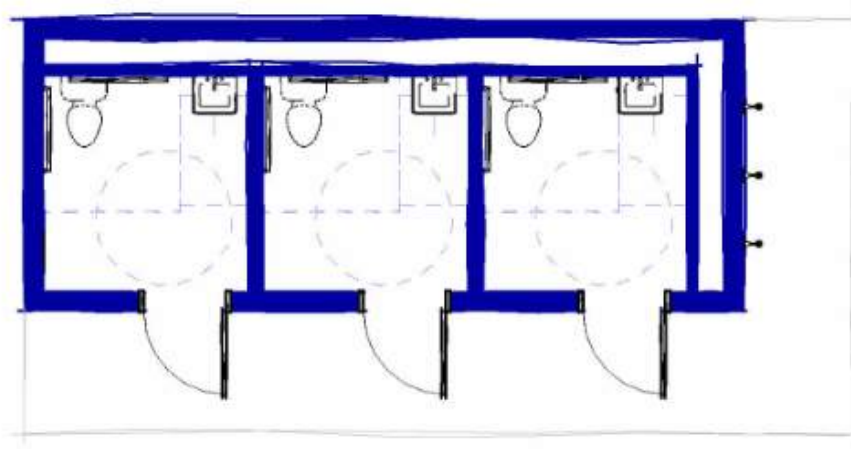
The Lutheran Camping Corporation
of Central Pennsylvania
Kirchenwald, Nawakwa, & The Wittel Farm



PROGRAM ENHANCEMENTS - NAWAKWA



The Lutheran Camping Corporation
of Central Pennsylvania
Kirchenwald, Nawakwa, & The Wittel Farm



- Construct new restrooms near the pool in lower camp and near the pavilion in upper camp
- Winterized facility
- 3 accessible restrooms
- Outdoor shower heads at pool location
- Total proposed area 280 square feet

A

NAWAKWA: NEW RESTROOMS



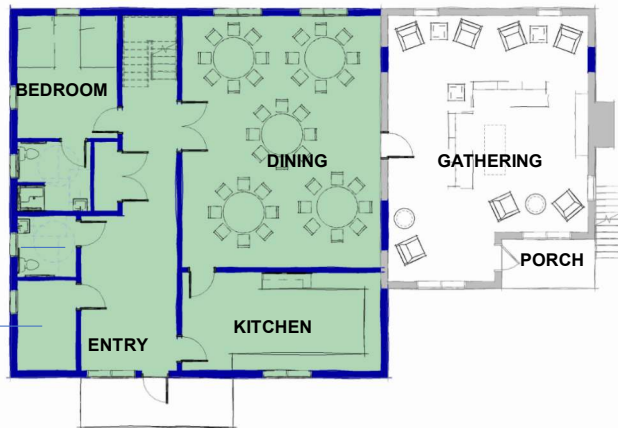
The Lutheran Camping Corporation
of Central Pennsylvania
Kirchenwald, Nawakwa, & The Wittel Farm



EXISTING FIRST FLOOR PLAN



EXISTING SECOND FLOOR PLAN



PROPOSED FIRST FLOOR PLAN

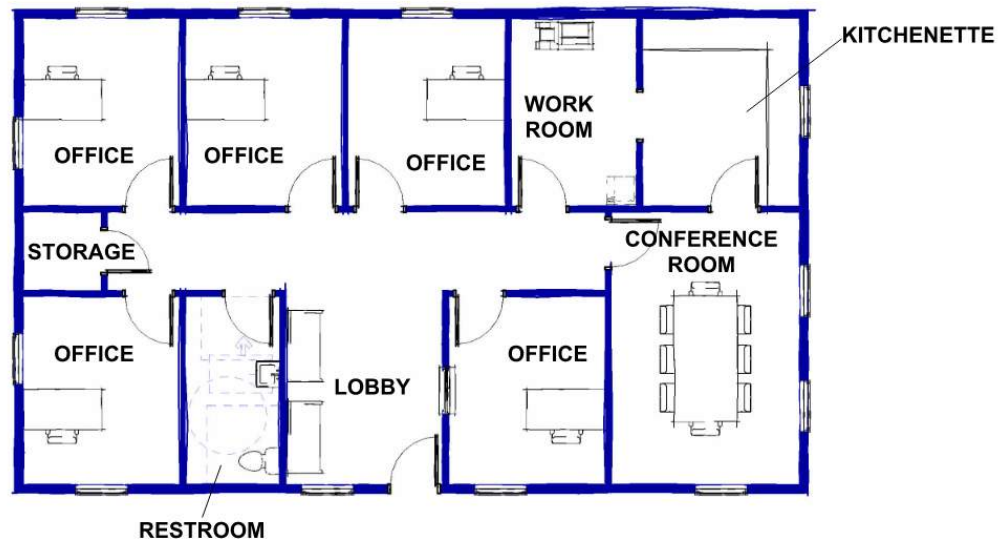


PROPOSED SECOND FLOOR PLAN

- Provide upgraded retreat facilities for youth groups.
- Construct a two-story addition totaling 4065 square feet.
- New stair, kitchen, dining, accessible restroom and accessible en-suite bedroom on the first floor.
- 2 bunk rooms with changing rooms, 4 individual restrooms and 2 bedrooms within the second floor of addition.
- Convert existing building to gathering space on the first floor, with a third bunk room and break out space on the second floor.
- Total capacity: 28 in bunk rooms, plus 3 double bedrooms



The Lutheran Camping Corporation
of Central Pennsylvania
Kirchenwald, Nawakwa, & The Wittel Farm



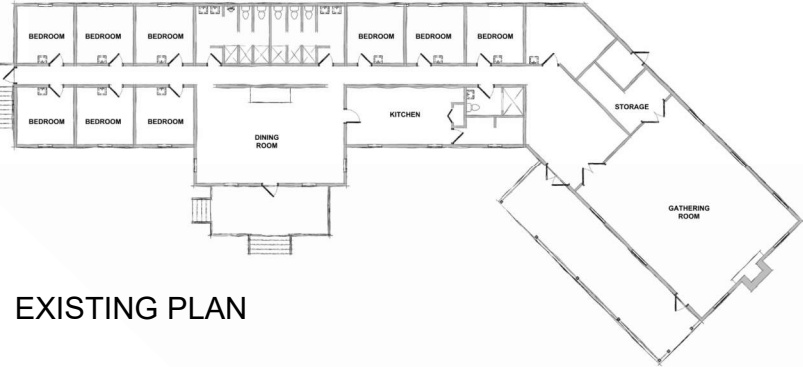
- New construction to provide a more visible, functional office location for LCC staff.
- Proposed location near Brenneman would be visible from road
- 5 individual offices, work room, meeting space, kitchenette and restroom
- Total proposed area 1600 square feet



The Lutheran Camping Corporation
of Central Pennsylvania
Kirchenwald, Nawakwa, & The Wittel Farm

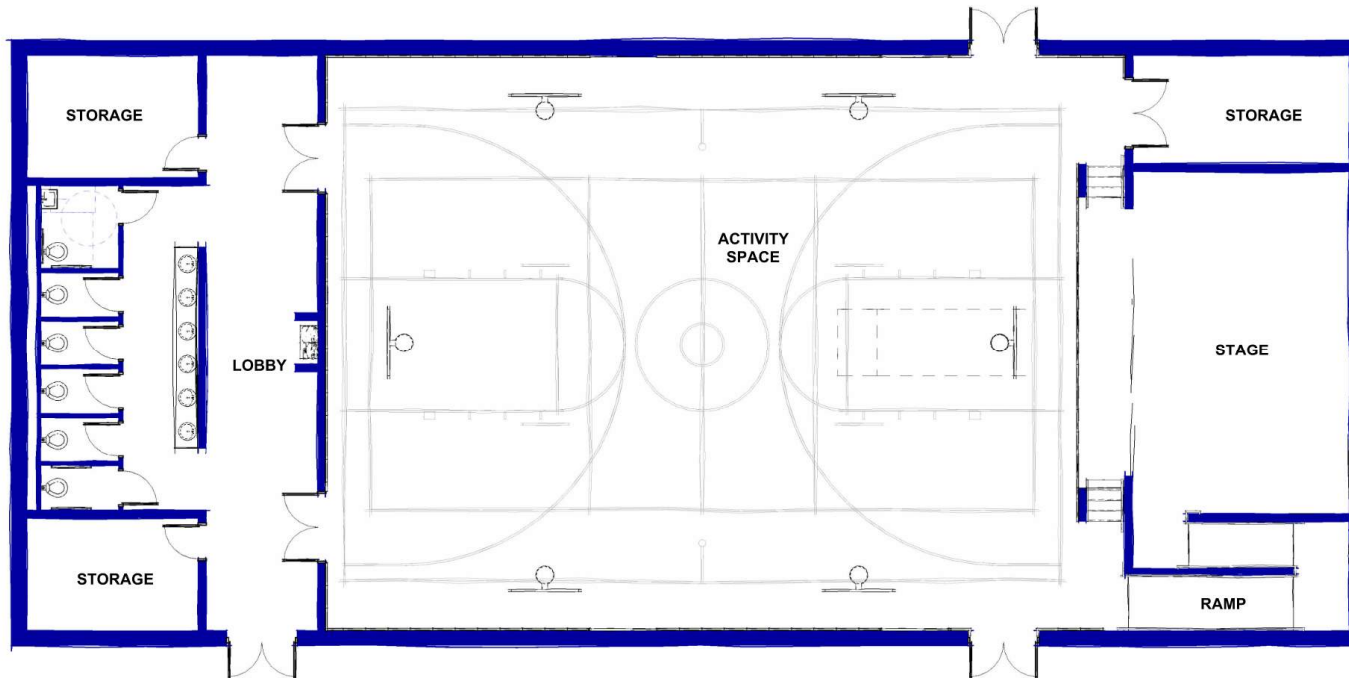


PROPOSED PLAN



EXISTING PLAN

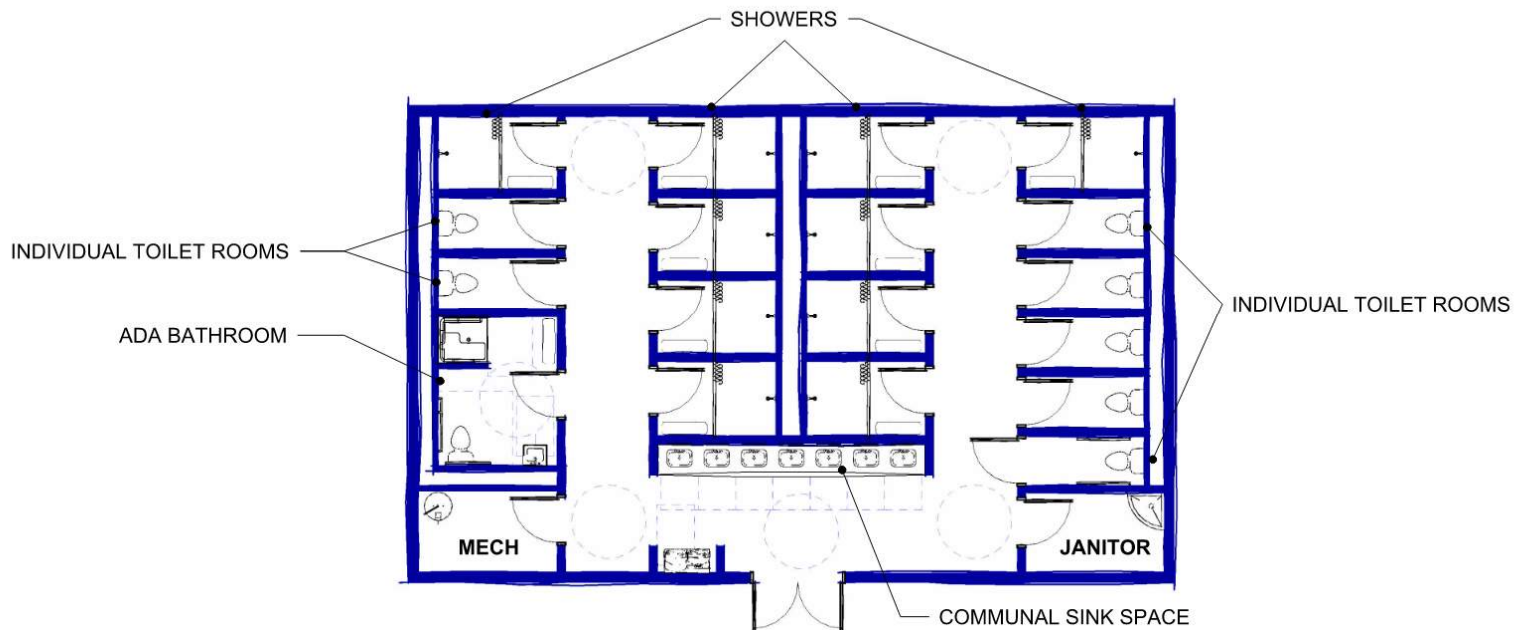
- Existing building area: +/- 5000 square feet
- Existing capacity: 40 people in 10 family bedrooms
- Proposed additions: 4200 square feet
- Proposed renovation: 2300 square feet
- The new facility would offer sleeping accommodation for a total of 78 people in family bedrooms.



- Provide a multi-purpose activity space to serve groups during the winter or inclement weather.
- Basketball court, stage and storage
- Inclusive restroom design: open sink area and individual toilet rooms with full height partitions.
- Total proposed area 6525 square feet



The Lutheran Camping Corporation
of Central Pennsylvania
Kirchenwald, Nawakwa, & The Wittel Farm



- Construct new wash house facilities to serve the cabins within Lower Camp.
- Provide greater privacy and inclusivity
- Individual toilet rooms enclosed by full height partitions
- Individual shower and changing stalls
- Open communal sink area
- Total proposed area 1645 square feet

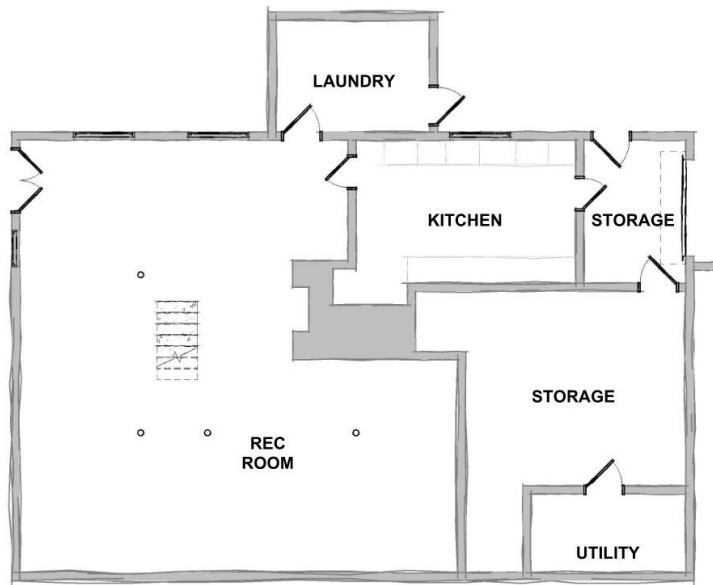
F

NAWAKWA: NEW WASH HOUSE

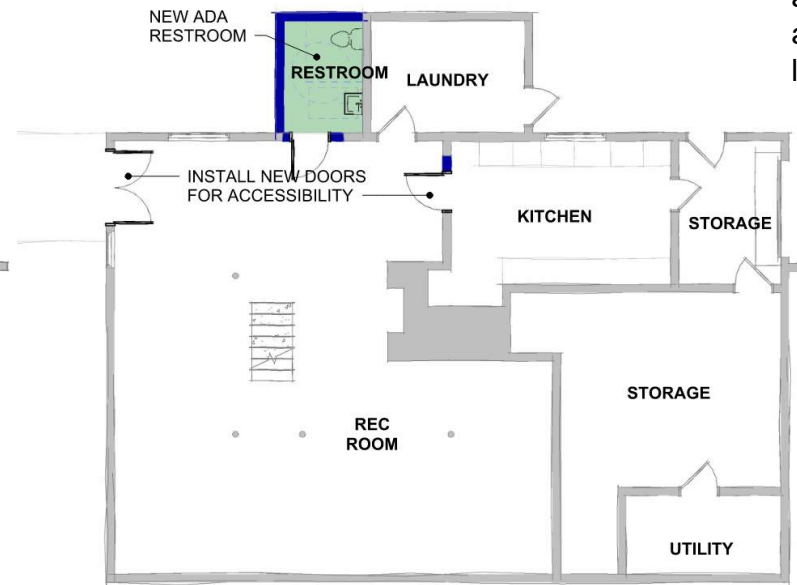


The Lutheran Camping Corporation
of Central Pennsylvania
Kirchenwald, Nawakwa, & The Wittel Farm

- Addition (70 square feet) to the lower level of Grove lodge to provide an accessible restroom adjacent to the recreation room.
- Minor interior renovations and additional paving to provide accessible entrance to the lower level.



EXISTING LOWER LEVEL PLAN



PROPOSED LOWER LEVEL PLAN

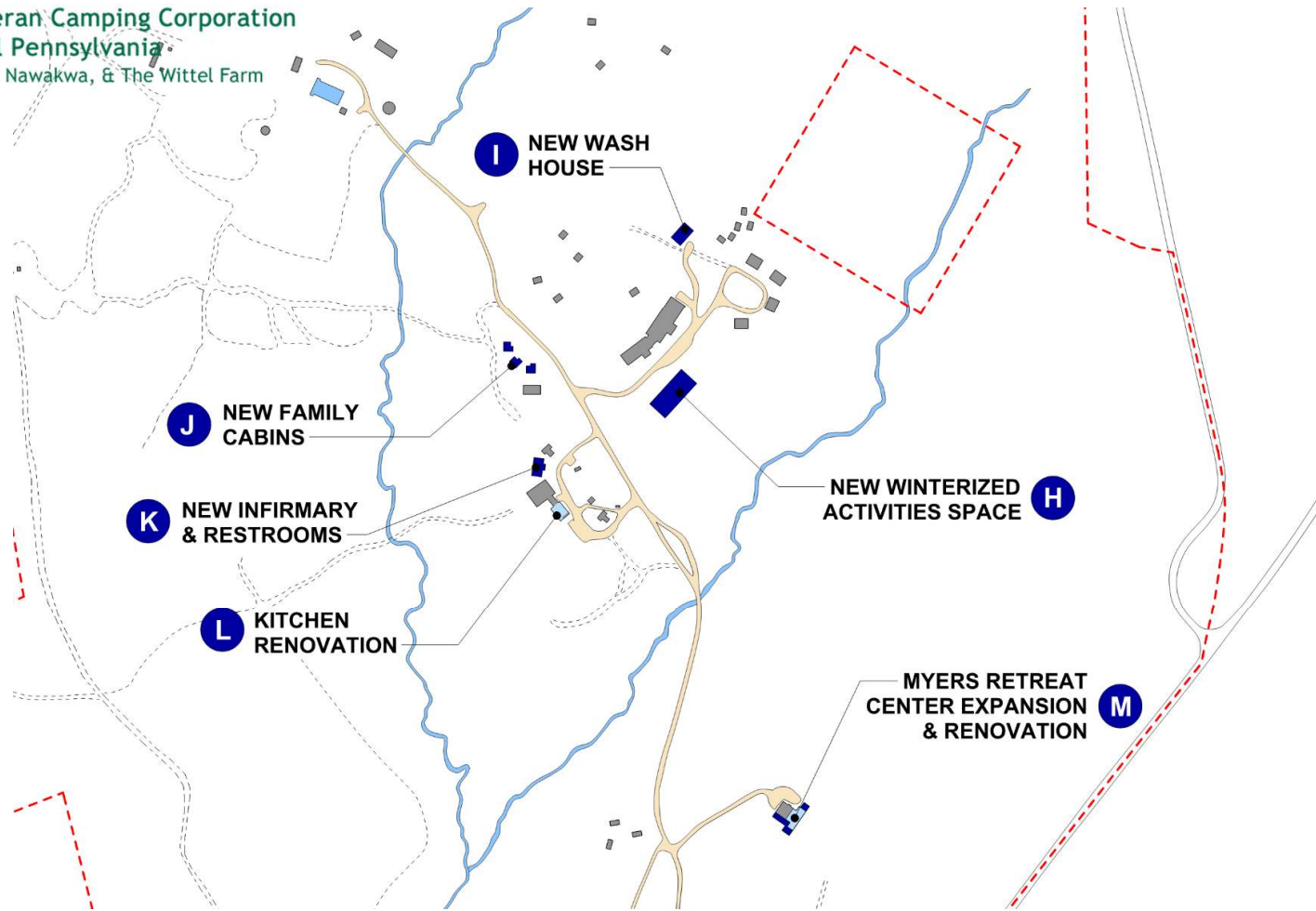


NAWAKWA: GROVE LODGE LOWER LEVEL ADA RESTROOM





The Lutheran Camping Corporation
of Central Pennsylvania
Kirchenwald, Nawakwa, & The Wittel Farm

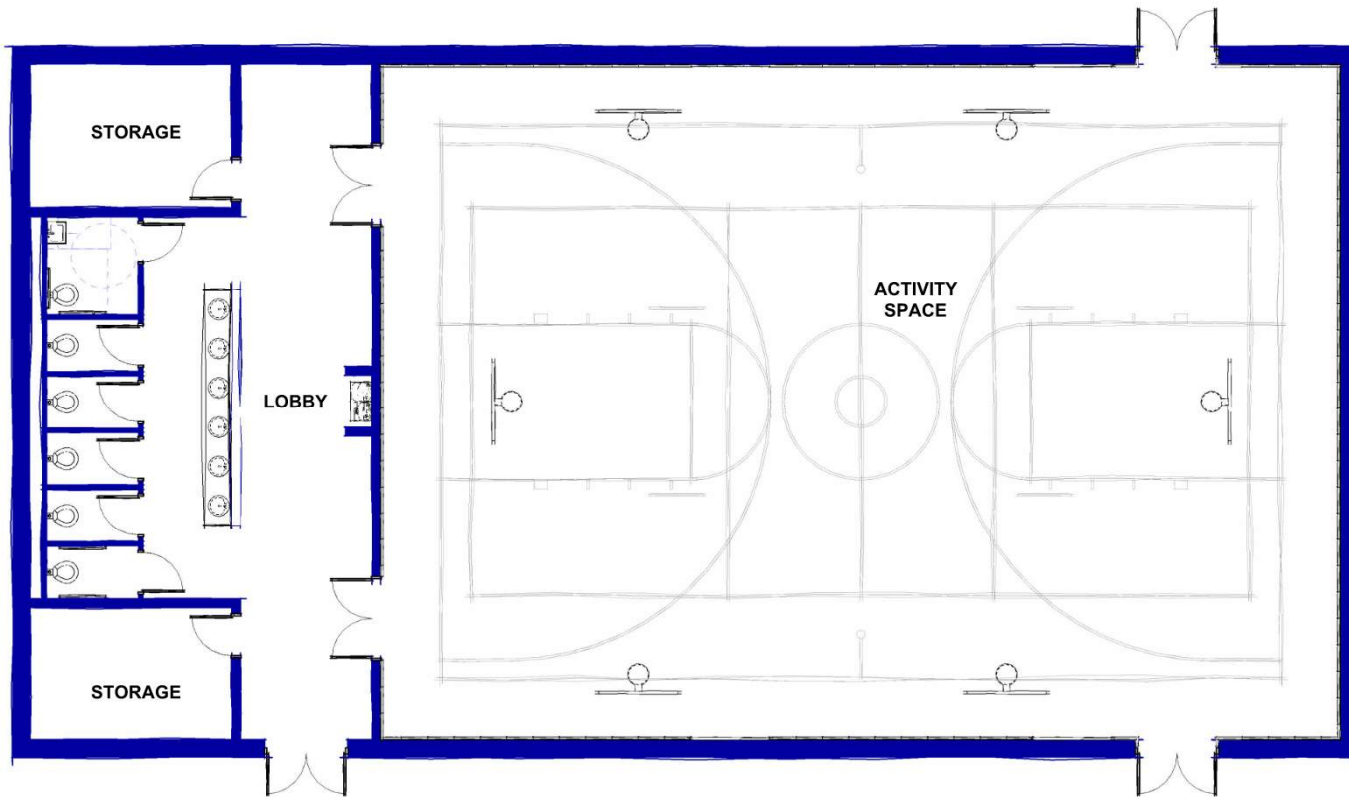


BUILDING LEGEND

- EXISTING
- ADDITIONS
- RENOVATIONS

PROGRAM ENHANCEMENTS - KIRCHENWALD

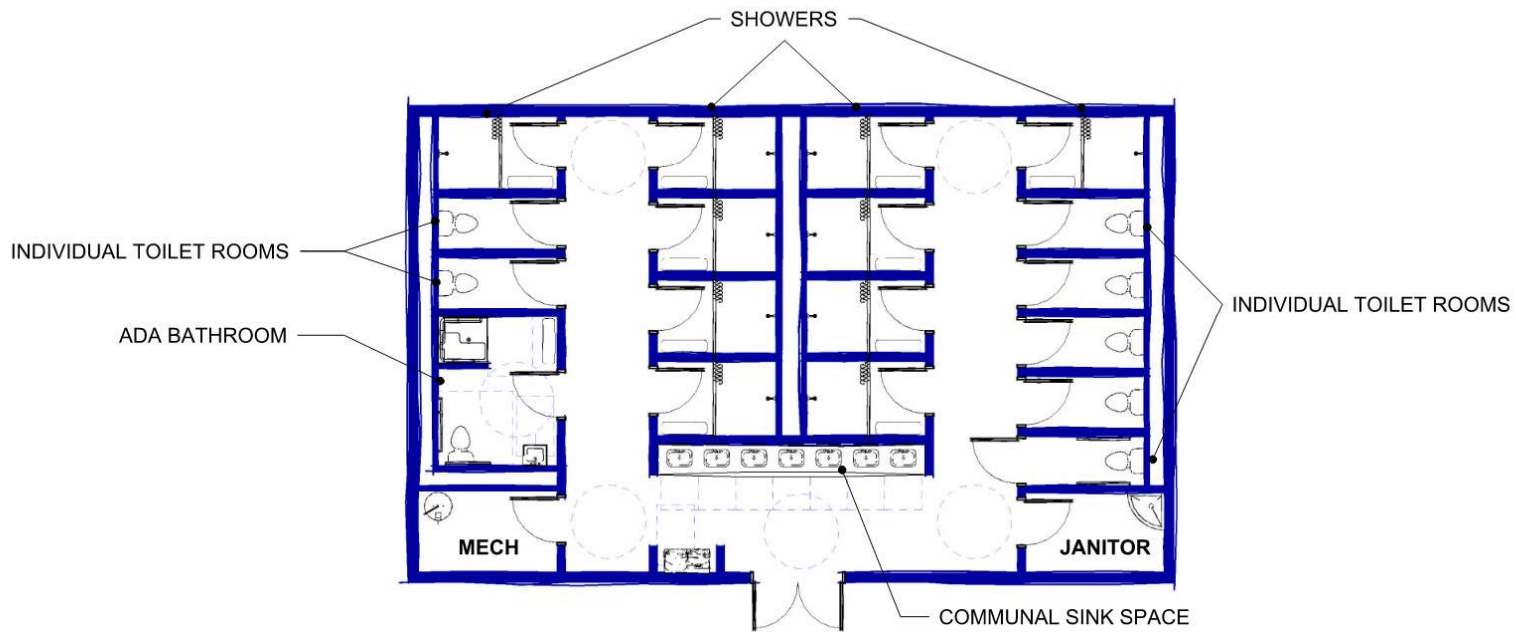




- Provide a multi-purpose activity space to serve groups during the winter or inclement weather.
- Court area could be used for basketball, pickleball, volleyball
- Inclusive restroom design: open sink area and individual toilet rooms with full height partitions.
- Total proposed area 5530 square feet



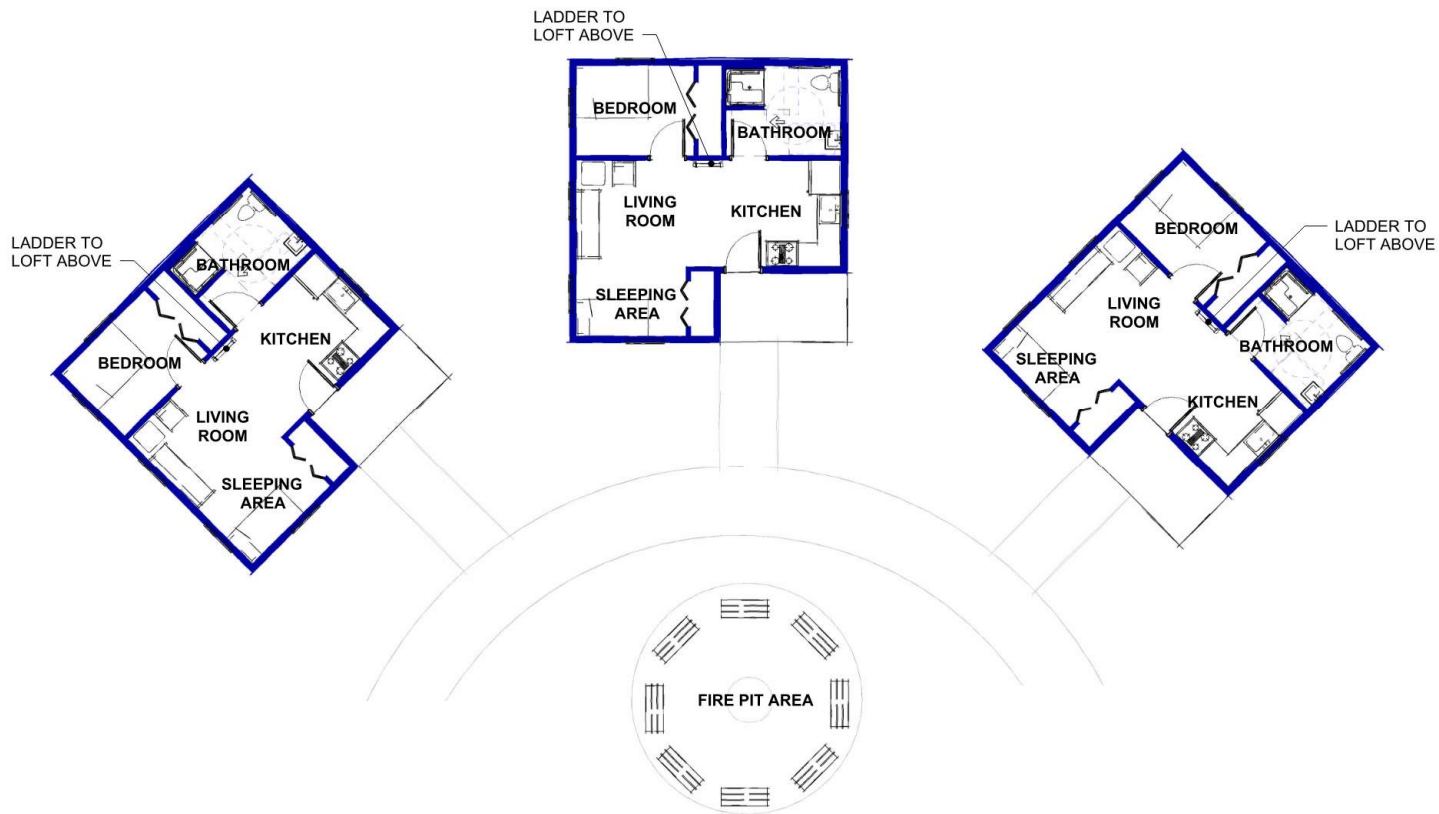
The Lutheran Camping Corporation
of Central Pennsylvania
Kirchenwald, Nawakwa, & The Wittel Farm



- Construct new wash house facilities to serve the cabin circle and Adirondack shelters
- Provide greater privacy and inclusivity
- Individual toilet rooms enclosed by full height partitions
- Individual shower and changing stalls
- Open communal sink area
- Total proposed area 1645 square feet



The Lutheran Camping Corporation
of Central Pennsylvania
Kirchenwald, Nawakwa, & The Wittel Farm



- Create a small group of family cabins for the Main Camp.
- Cabins would serve as staff housing during summer and rentable retreat facilities in the off season.
- Each cabin would include an ADA bathroom, small kitchen/dining/living area, a double bedroom and additional space for a twin or bunk.
- Additional beds could be located in the loft space.
- Each cabin proposed area: 525 square feet



The Lutheran Camping Corporation
of Central Pennsylvania
Kirchenwald, Nawakwa, & The Wittel Farm



- Provide new winterized structure located near the dining pavilion.
- Restrooms located near path to pavilion
- New infirmary including nurse's office space, exam room, restroom with laundry facilities
- Bedroom and bathroom to provide nurse's accommodation during camp
- Total area 1230 square feet

K

KIRCHENWALD: NEW INFIRMARY AND RESTROOMS

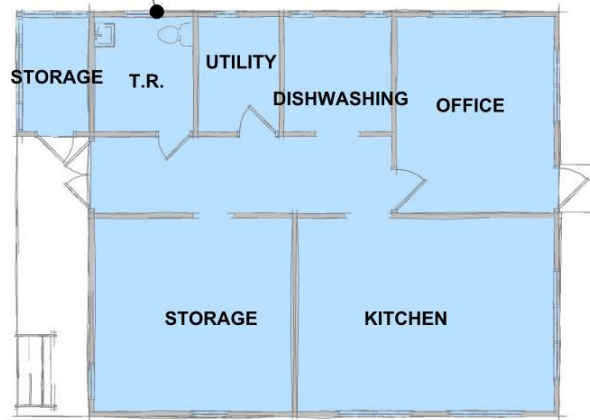
M MAROTTA/MAIN
ARCHITECTS



The Lutheran Camping Corporation
of Central Pennsylvania
Kirchenwald, Nawakwa, & The Wittel Farm

RENOVATE
EXISTING KITCHEN
1085 GSF

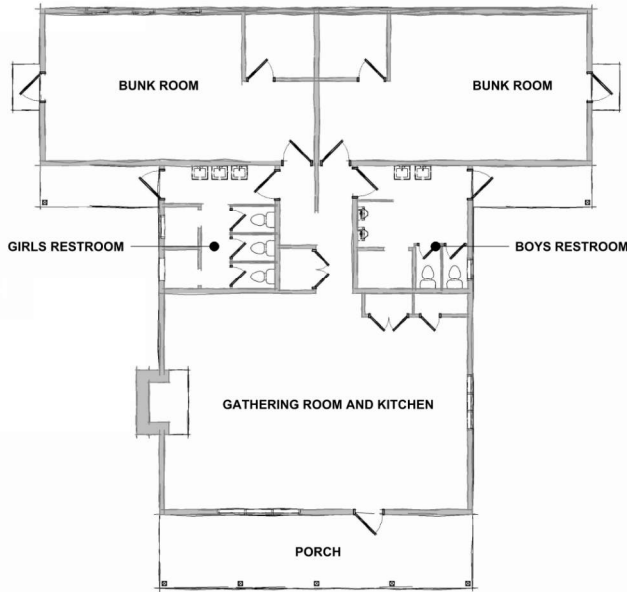
- WINTERIZE
- UPGRADE HVAC



- Provide better facilities for summer kitchen staff
- Allow expansion of food service in pavilion for retreats or events outside of the summer months.
- Winterize the existing kitchen building
- Upgrade the mechanical system to provide heating and cooling
- Renovation area 1085 square feet



The Lutheran Camping Corporation
of Central Pennsylvania
Kirchenwald, Nawakwa, & The Wittel Farm



EXISTING PLAN



PROPOSED PLAN

RENOVATION AREA	2315 SF
ADDITION	1052 SF
TOTAL AREA	3367 SF

- Renovate and expand existing lodge to provide upgraded accessible retreat facilities for youth groups
- Provide greater privacy in bunk rooms and bathrooms
- Provide separate kitchen from gathering space
- Total capacity 40 people in bunks
- 3 individual restrooms, 3 individual showers, 1 accessible restroom and shower

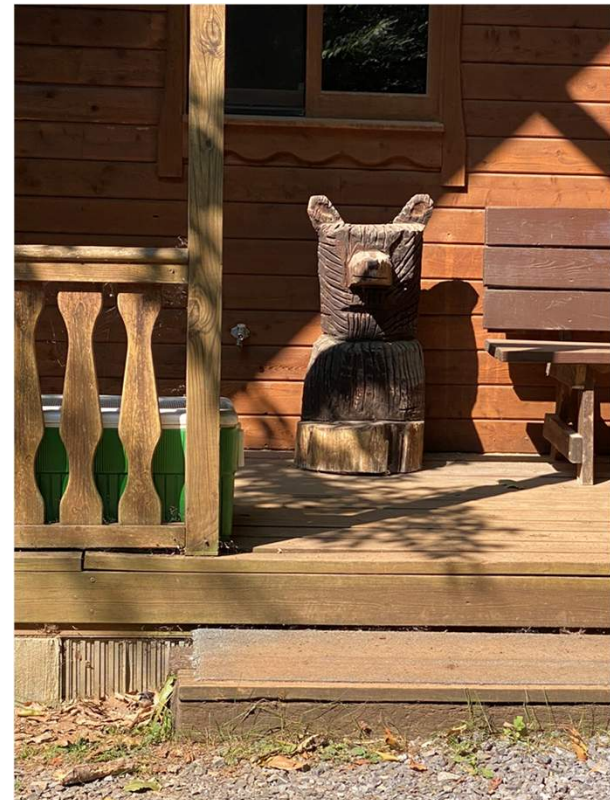


KIRCHENWALD: MYERS EXPANSION





The Lutheran Camping Corporation
of Central Pennsylvania
Kirchenwald, Nawakwa, & The Wittel Farm



DISCUSSION AND INPUT ON PRIORITIES